

SPAWN lesson

GC: Salute

Pilot: Salute (they get in + aircraft check)

GC: Engine Start

GC: Signals(taxi)

Pilot: Signals(taxi)

GC: Go to the front to signal

GC: Halt then move to side

GC: Salute(takeoff)

Pilot: Salute(takeoff)

CARRIER lesson

weld, launch (timer or command)

Scramble alert

Enemy submarines have been spotted 5 miles from base, Scramble! Scramble! All available pilots must immediately deploy to assigned location

Call Ball

Copy Stinger-1, inbound, Go ahead and call ball, maintain heading

Diagram info

RWY 29 would be, RWY 24 (Alpha 2)

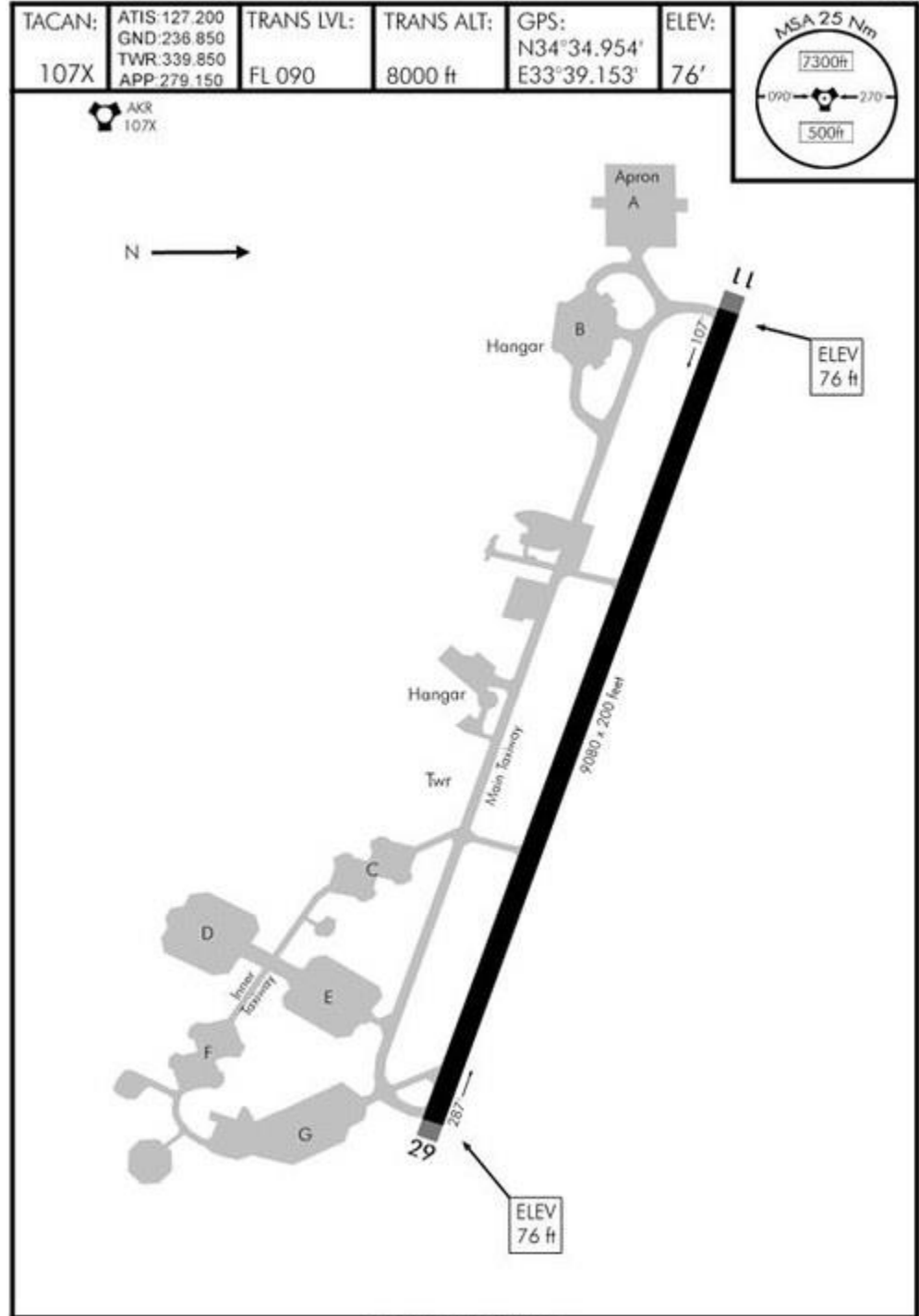
RWY 11 would be, RWY 06 (Foxtrot 2)

EMF NAVIGATION VOLUME

AIRPORT DIAGRAM

Date: 21 April 2019 | 4

AKROTIRI (LCRA)
CYPRUS



AIRPORT DIAGRAM

NOT FOR REAL NAVIGATION - FALCON 4 BMS ONLY

© COMBATSIM CHECKLISTS 2014

AKROTIRI (LCRA)
CYPRUS

GND Contact instructions:

GND, [CALLSIGN], Requesting engine startup for Akrotiri IFR.

GND REPLY: [CALLSIGN], Cleared to Akrotiri, expect RW[number] departure, climb[altitude] 2 mins after departure, Squawk[number].

GND, Cleared to Akrotiri, expecting RWY[NUMBER] departure, climbing[Altitude] 2 mins after departure, squawk [Number], [CALLSIGN]

GND REPLY: [CALLSIGN] Readback correct, contact GND for taxi instructions.

GND, [CALLSIGN] Requesting engine start for taxi.

GND REPLY: [CALLSIGN] Engine Start approved, wait for instructions.

GND REPLY(you can pick the departure runway): [CALLSIGN] Cleared for taxi, via, Tango, Foxtrot 2/Alpha 2, advise holding short RW 24/06.

GND, cleared for taxi, via Tango, Foxtrot 2/Alpha 2, advise holding short RW 24/06, [CALLSIGN].

GND REPLY: [CALLSIGN] Readback correct. Contact TWR Frequency One, One, Eight, Decimal, One, Two, Five.

Contacting TWR Frequency One, One, Eight, Decimal, One, Two, Five, [CALLSIGN].

then ATC switches to tower seat

TWR Contact Instructions:

PILOT: TWR, [CALLSIGN], Holding Short, A2/F2, Expecting RW 24/06 departure, requesting line up.

TWR: [CALLSIGN], Cleared for line up and wait(or line up and take off), RW[number].

PILOT: Cleared to line up and wait RW[NUMBER], [CALLSIGN].

PILOT: [CALLSIGN] Requesting take off RW[NUMBER].

TWR: [CALLSIGN] Cleared for take off RW[NUMBER], climb and maintain[ALTITUDE], squawk[NUMBER].

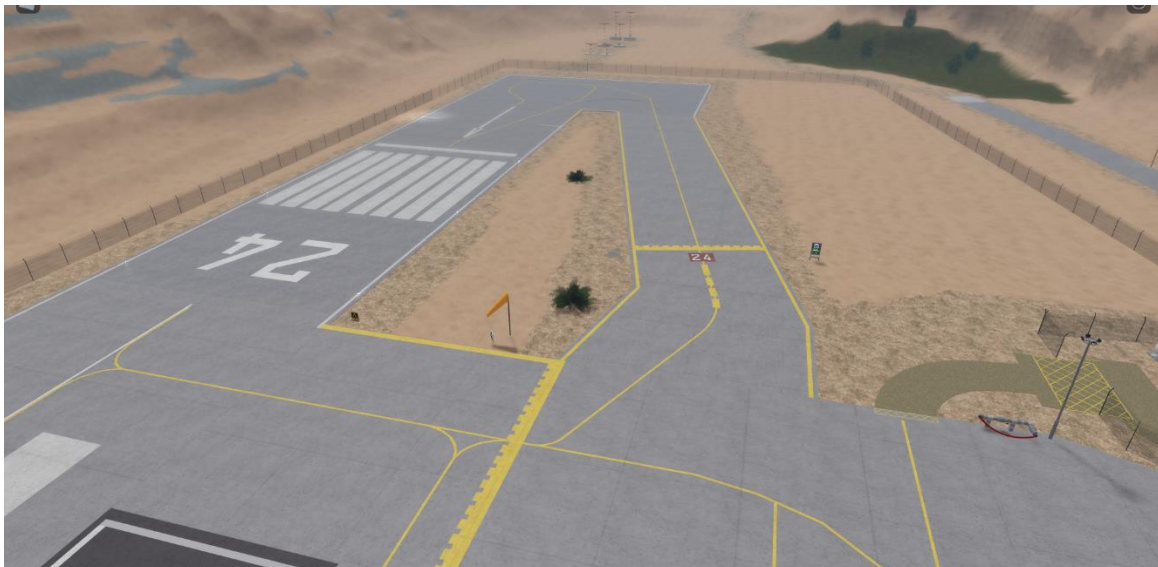
After ATC switches to tower



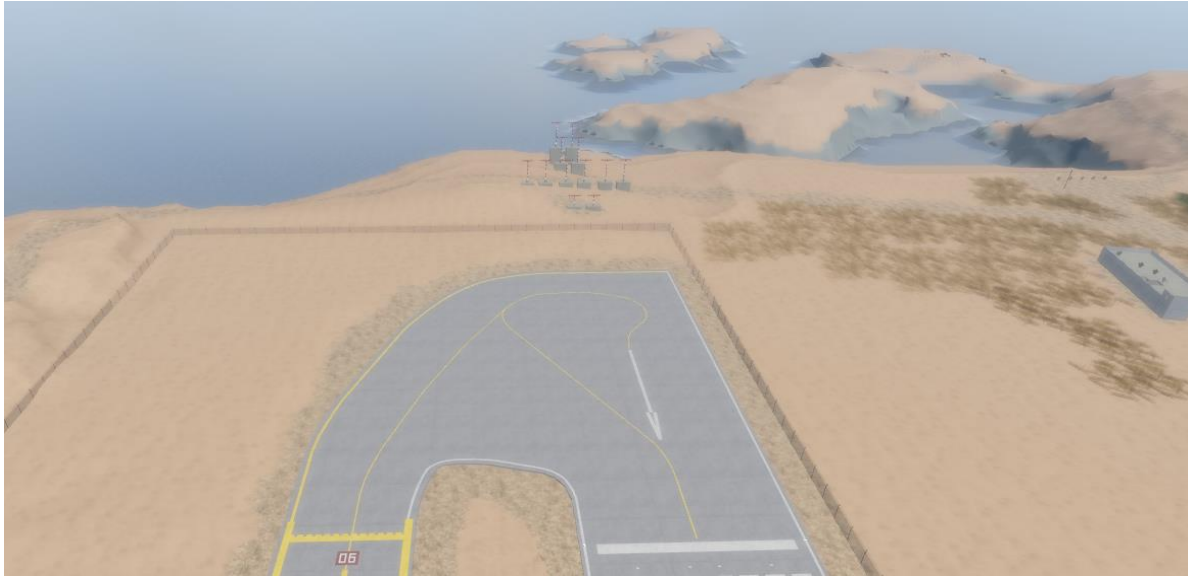
THIS ENTIRE AREA IS TANGO.

A2=Right entrance/exit to runway

A1=Left entrance/exit to runway



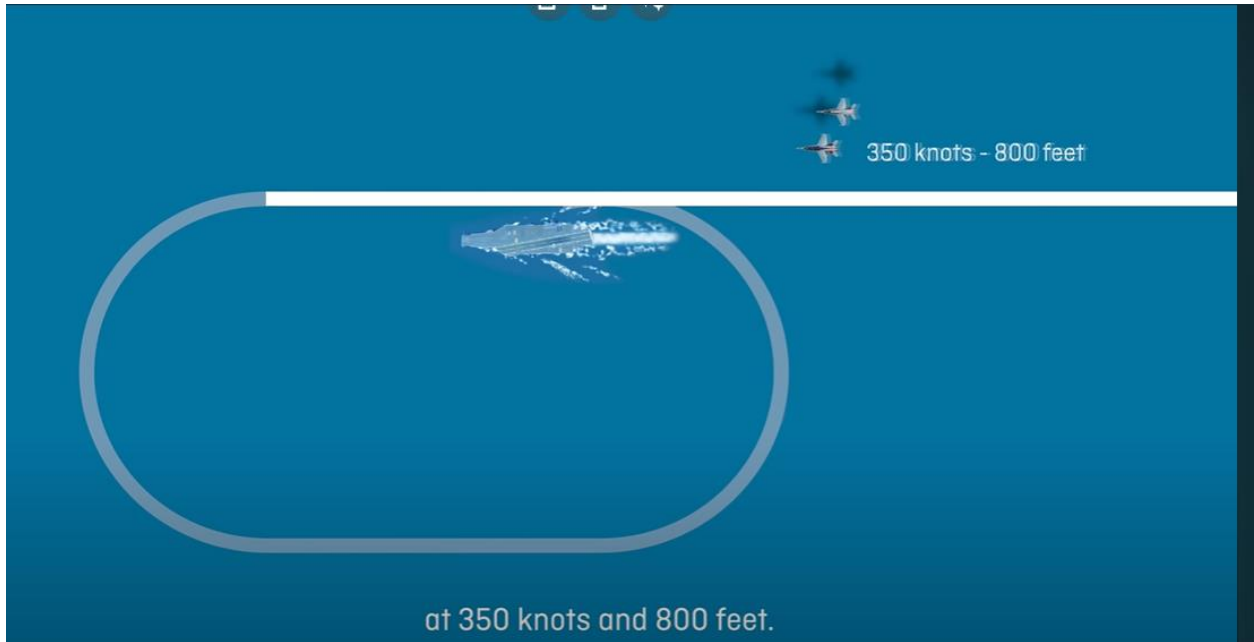
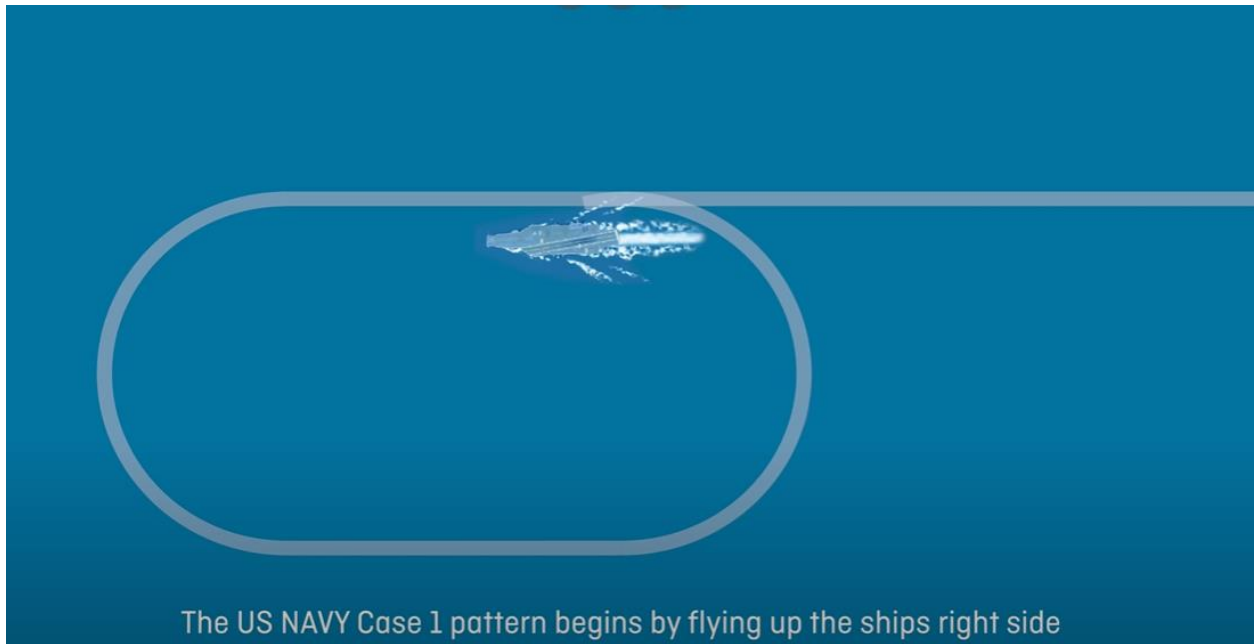
Taxiway F2 = Foxtrot 2



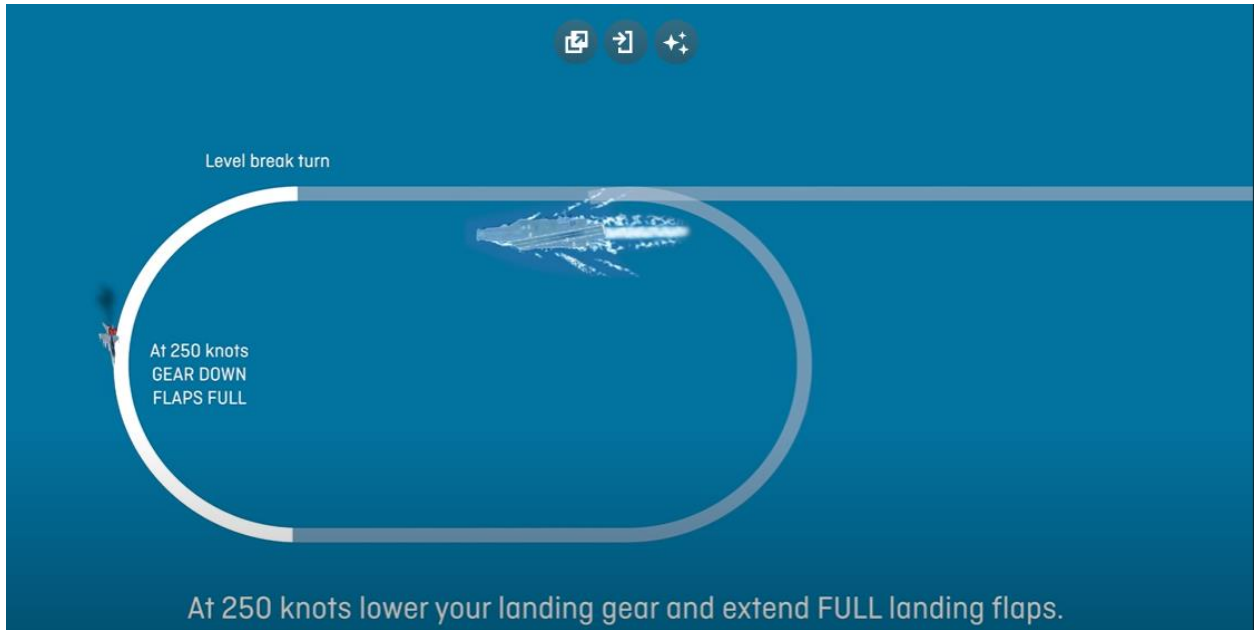
Taxiway Tango(im not actually sure about this aitor fix it if its wrong pls)



Carrier info



450kts and 1000ft.*



400kts*

